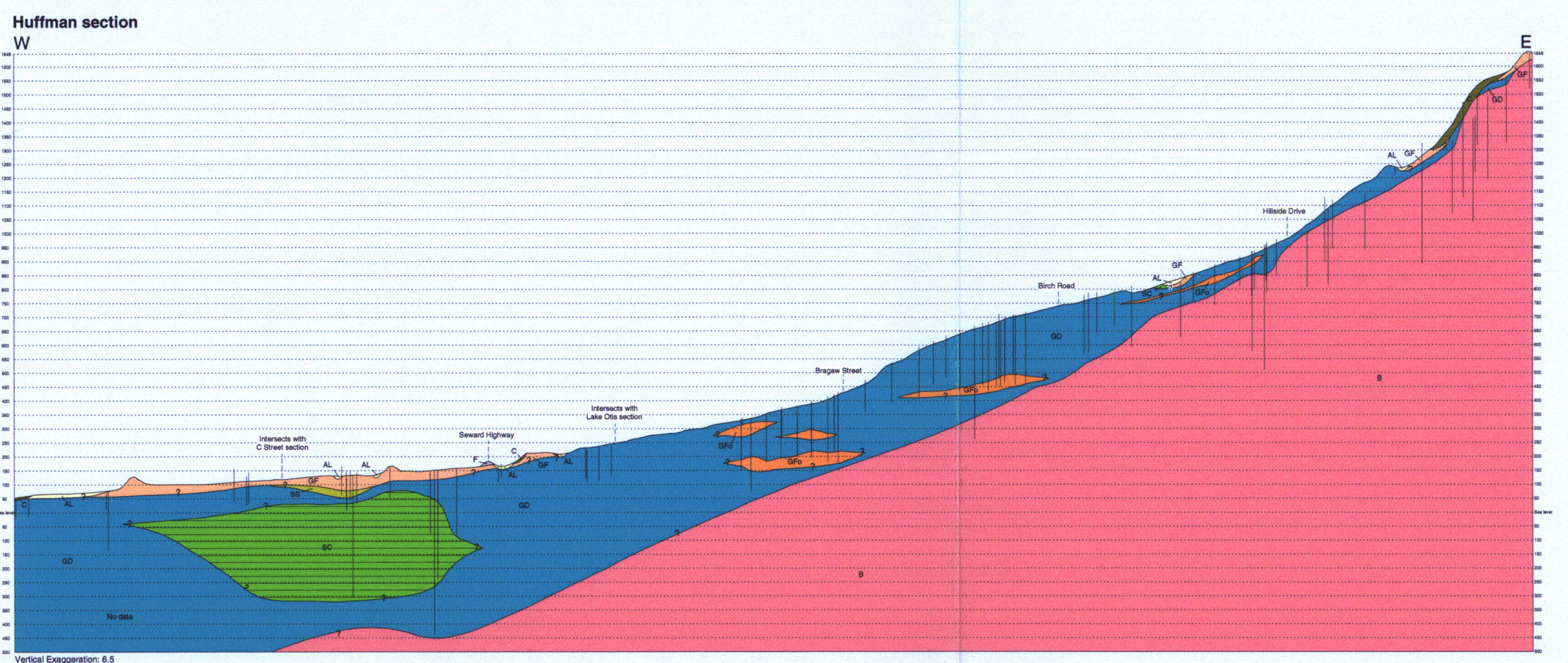


- EXPLANATION**
See accompanying text for detailed descriptions
- SC - Glacioestuarine or lacustrine silt and clay
 - GF - Glaciofluvial, glaciodeltaic, or alluvial-fan deposits; sand & gravel
 - C - Colluvium; thin deposits of gravel, sand, and silt, generally on slopes
 - AL - Holocene alluvium; dominantly loose gravel & sand with some silt
 - SS - Silt and fine sand of glacioestuarine or eolian origin
 - GFo - Older glaciofluvial or alluvial-fan deposits; dense sand & gravel
 - TS - Tidal silt and sand
 - F - Artificial fill; loose to dense mixtures of gravel, sand, and silt
 - LS - Landslide deposits; any material deformed or displaced by sliding
 - SCs - Zone of soft, locally sensitive clay and silty clay
 - B - Undifferentiated pre-Quaternary deposits or bedrock
 - GD - Undifferentiated glacial drift; dense diamicton to clean sand and gravel
- Approximate subsurface extent of fine-grained facies, Bootlegger Cove Formation
Approximate subsurface extent of Elmendorf-age outwash deposits
Projected locations of borehole and water-well logs

Horizontal scale 1 in. = 0.5 mile (1 cm = 300 m)
Vertical exaggeration given at lower left of each section



GEOLOGIC CROSS SECTIONS OF CENTRAL AND EAST ANCHORAGE, ALASKA, FROM BOREHOLE AND WATER-WELL DATA

by
R.A. Combellick
Alaska Division of Geological & Geophysical Surveys
1999

THIS IS A PRELIMINARY REPORT OF SCIENTIFIC RESEARCH. IT HAS RECEIVED TECHNICAL REVIEW BUT HAS NOT BEEN REVIEWED FOR CONFORMITY TO THE EDITORIAL STANDARDS OF DGGs.



Department of Natural Resources
Division of Geological & Geophysical Surveys

The State of Alaska makes no express or implied warranties (including warranties for merchantability and fitness) with respect to the character, functions, or capabilities of the electronic services or products on their Appropriations for any user's purposes. In no event will the State of Alaska be liable for any incidental, indirect, special, consequential or other damages suffered by the user or any other person or entity whether from use of the electronic services or products, any failure thereof or otherwise, and in no event will the State of Alaska be liable to the Requester or anyone else exceed the fee paid for the electronic service or product.